

FORT HUACHUCA-SIERRA-VISTA, ARIZONA

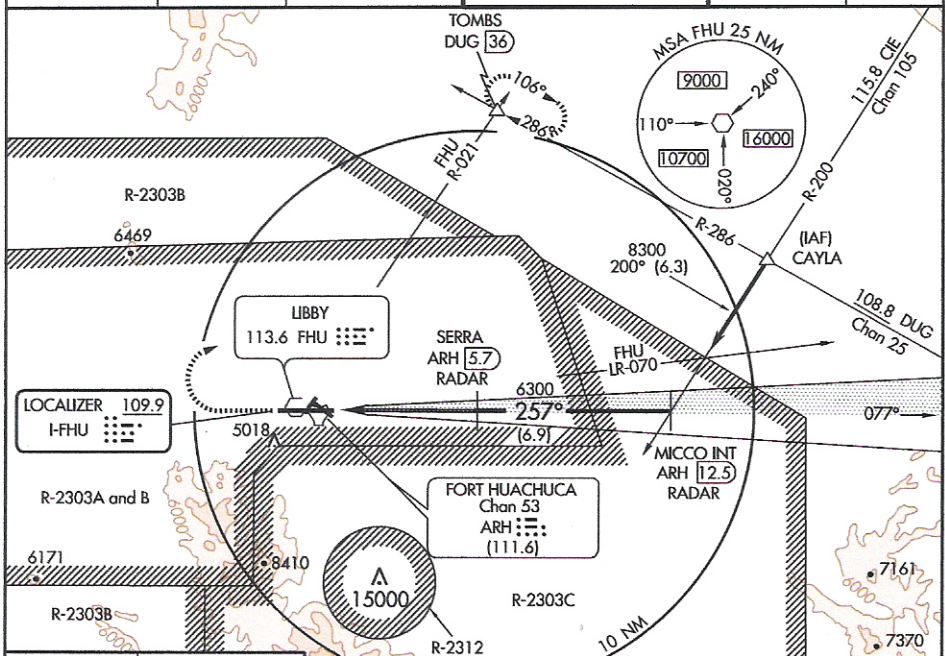
AL-5081 (FAA)

ILS or LOC RWY 26

LOC I-FHU 109.9	APP CRS 257°	Rwy Idg 12001	TDZE 4629	Apt Elev 4719
---------------------------	------------------------	-------------------------	---------------------	-------------------------

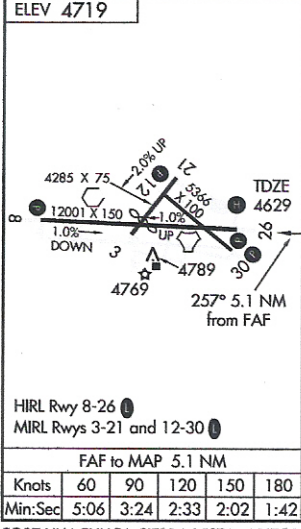
FORT HUACHUCA-SIERRA VISTA/ SIERRA VISTA MUNI-LIBBY AAF (F'HU)

<p>⚠ Circling not authorized south of Rwy 8 and 30.</p> <p>ASR/PAR</p>		<p>MISSED APPROACH: Climb to 5300, then climbing right turn to 9500 via FHU R-021 to TOMBS and hold.</p>			
ATIS 134.75 265.7	ASOS 119.675	LIBBY AAF GCA* 127.05 254.35	LIBBY TOWER* 124.95 (CTAF) 284.75	GND CON 121.7 268.7	UNICOM 122.95



SW-4, 12 FEB 2009 to 12 MAR 2009

SW-4, 12 FEB 2009 to 12 MAR 2009



RADAR or DME REQUIRED

5300	9500	TOMBS	SERRA ARH [5.7] RADAR	MICCO INT ARH [12.5] RADAR
<p>TACAN ARH [0.6]</p>		<p>6300 257° 8300</p> <p>Procedure Turn NA</p> <p>GS 3.00° TCH 49</p>		
CATEGORY	A	B	C	D
S-ILS 26	4829-3/4 200 (200-3/4)			
S-LOC 26	4920-1 291 (300-1)			
CIRCLING	5160-1 441 (500-1)	5180-1 461 (500-1)	5180-1½ 461 (500-1½)	5280-2 561 (600-2)

FORT HUACHUCA-SIERRA-VISTA, ARIZONA
Amdt 3 09015

FORT HUACHUCA-SIERRA VISTA/ SIERRA VISTA MUNI-LIBBY AAF (F'HU)
31°35'N-110°21'W

ILS or LOC RWY 26